

LIX

INDUSTRIES



BOBTAIL BUILDER

FEWER FITTINGS. FEWER LEAK POINTS.

> Efficient Piping Design:

- Layout designed to reduce downtime.
- Fewer fittings. Fewer leak points.
- Welded flanges - not threaded guesswork.
- Sweep bends for maximum flow.

> Compliance:

Engineered correctly from the start

- DOT
- NFPA
- Properly integrated emergency systems

> Attention to Detail:

The difference is in what you don't see

- Protected wiring with sealed connections.
- Weather - shielded lighting systems.
- Reinforced structural components.



**We don't just build trucks.
We build revenue - producing fleet assets**

Lux1075.com
(417) 512-7019



LAX

INDUSTRIES



STANDARD FEATURES:

"We build for rough roads, long days and real-world operators"

> Efficient Piping - Schedule 80

- Stainless Steel
- Painted
- Welded with Sweeps

> Meter, Register & Printer.

- Liquid Controls
- TCS



> Hose Reel

- 150' hose

> Base Engineering Remote



> Rear Controls

- Belly Valve, Vapor, Throttle and PTO
- Engraved Labeled switches.

> Sealed Components

- Enclosed housing protect hanging wires.

> Rockguard

- Applied to bottom 1/3rd of Barrel

> Backup Camera

> Work & Safety Lights

> Power Hub

- Sealed fuses & relays.

> Protective wire loom

> Nozzle Holster

> Trim Lock

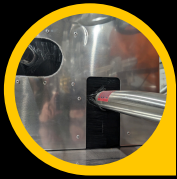


LAX

INDUSTRIES



ENHANCED FEATURES:



> Brush Guards around openings



> Hydraulic PTO to Pump Kit



> Hose reel cover.



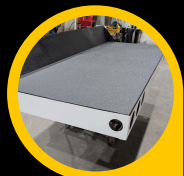
> Enclosed Deck



> Rockguard Truck Frame.



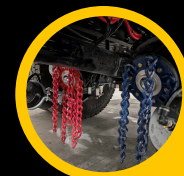
> Shovel & Bucket holder



> Rockguard top of Deck.



> Propane Powered System
• Alliance Auto Gas / Prins



> Automatic Snow Chains



> Cab work Lights

Built to withstand every climate from extreme cold in Alaska, intense heat in Texas and Corrosive salty coastal environments.

LUX

INDUSTRIES



**Our Bobtails look like their built for the showroom
but we build them for:**

- **Rough Roads**
- **Demanding Delivery Schedules**
- **Long Operational Days**
- **Operators who depend on their equipment.**

➤ **Chassis:**

- Peterbilt, Kenworth, Ford, International, Mack, Freightliner and Hino.
- Single and Tandem Axle.

➤ **Engine/Transmission:**

- Cummins or GAS
- Allison Automatic RDS .

FEWER FITTINGS. FEWER LEAK POINTS.



Joe Hicks
(417) 814-0358
joe@Lux1075.com
Lux1075.com



Training & Service